

CFI 2012

The ice is starting to come off and the extended forecast for this summer looks great! All of us at CFI are excited to get back into the warm weather and pick up where we left off last year!

CFI – NEWS AND UPDATES

The past year was extremely busy for the CFI – Global Fisheries Management team, with many projects and

activities of all types being both completed and initiated. Aside from constructing the most innovative and effective fisheries enhancements in the industry, CFI has been tapped as the foremost authority for several articles in publications relating to

fisheries enhancement and management. We were also featured in the Denver post in an article about fish habitat enhancement and restoration, as well as in the Hall and Hall publication about the integration of fisheries with ranching land practices.

In addition, CFI's wide-ranging experience will garner much attention in the media in 2012, as future articles and features with our expert citations are published. Be sure to stay informed on new developments by logging on to www.cfiglobal.com/blog for updates! Until then, here are a few projects, both finished and underway.

Fisheries Enhancement & Creation – Gunnison, Colorado

In the fall of 2011, CFI completed close to 2 miles of stream restoration and trout habitat improvement on Ohio Creek near Gunnison, Colorado. Ohio Creek is a major tributary to the Gunnison River that flows through historical hay farming and cattle ranching land, and the



Pre-construction condition



Immediately following CFI's Fall 2011 construction

A LOOK AT CFI SERVICES

River Restoration:

- Full-scale scientific data collection and CAD based stream design
- Army Corps and DOW permitting
- Fish and macroinvertebrate habitat improvement
- Structural implementation and construction

Fisheries Science:

- Electrofishing population surveys and reporting
- Benthic Macroinvertebrate studies and forage base analysis
- Fishery management and consulting

Stream Corridor Analysis:

- Riparian plant species inventory
- Riparian identification & classification
- Riparian condition assessment
- Wetland delineation

Stillwater Development:

- Pond engineering and design
- Construction and lining (natural & synthetic)
- Aquatic habitat management
- Custom aeration design & installation

Fishery Stocking Services:

- Trophy Trout
 - Brown Trout
 - Brook Trout
 - Rainbow Trout (Multiple Species)
 - Cutthroat Trout
- Forage base stockings
 - Freshwater Shrimp (*Gammarus lacustris*)
 - Fathead Minnows (*Pimephales promelas*)



CFI conducting a fish population survey



Detailed stream corridor analysis



CFI's Freshwater Shrimp nursery

www.cfiglobal.com
 Fort Collins - Colorado 80525
 Ph: 970.207.9110 Fax: 970.207.9118
 181 West Boardwalk, Suite 10





One of the key deficiencies on this stretch was abnormal bar development leading to very wide and shallow braided sections. Addressing this deficiency was among the chief priorities for CFI.

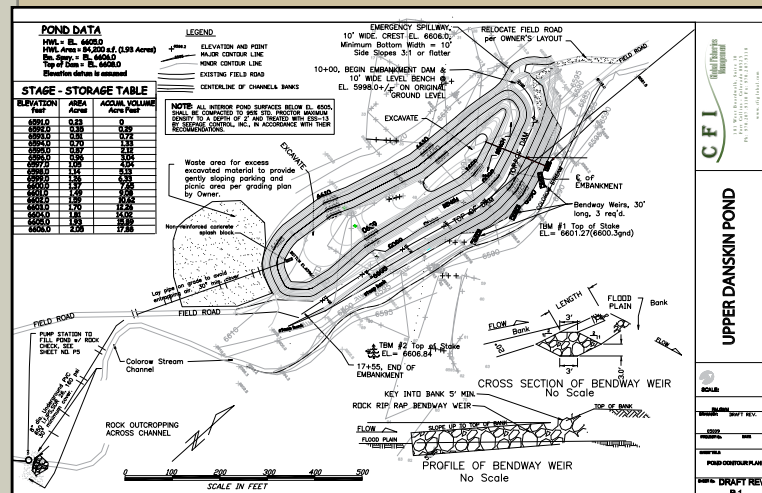
historical land practices had created an environment that was less than ideal for stream dwelling animals. In order to solve many of the biological and physical problems in this reach, structural manipulations of the stream corridor and habitat implementation were required, resulting in vastly improved biological integrity and physical habitat features for all trophic levels of the creek.

Stillwater Development Projects:

In addition to stream restoration and habitat improvement, CFI was engaged in many exciting stillwater development projects in 2011. Several large lakes and many smaller ponds were designed, cut into the ground, and started as productive fisheries and waterfowl ecosystems. The habitat structures, pond slopes, and aeration system designs were all conceived and constructed by the CFI - Global Fisheries Management team, at locations all over the Rocky Mountain West.

Spring Creek Creation Project:

Our Spring Creek creation project, initiated last year in Gunnison, Colorado, is progressing to the construction



CFI at work on the Ohio Creek fishery enhancement

phase in 2012. The design and permitting for a natural-feeling spring creek fishery has been completed, along with associated ponds and waterfowl habitat, and is set for construction in the spring of this year.

Stream Enhancement / Restoration:

In the same area near Gunnison, on an adjacent stretch of Ohio Creek, the data gathering and mapping process is underway on another mile section of degraded stream. With a much different character and new set of challenges for remediation, this stretch of Ohio Creek is similar to the previous year's project only in name. CFI is looking forward to the opportunity to apply our innovative science-based principles of stream restoration to this reach, and will continue our phased approach through completion in the fall of 2012.

CFI - FISH AND FORAGE

CFI has an industry-exclusive macroinvertebrate rearing and stocking program, centered on the freshwater shrimp



Gammarus lacustris, to boost the forage supply of any stream or pond fishery. Fathead minnows are also available to provide a forage-fish population in stillwater fisheries, allowing all predatory fish to flourish with an ample food supply.



CFI's salmonid rearing facilities are at capacity for 2012 with a diverse assortment of trout species and sizes, ready to infuse any fishery with premium quality fish. Our exclusive aquatic macroinvertebrate based feeding and rearing program ensures that all of our fish are the healthiest, most vibrantly colored and naturally acclimated trout available for stocking. Be sure to place your order now to reserve your fishery stock!