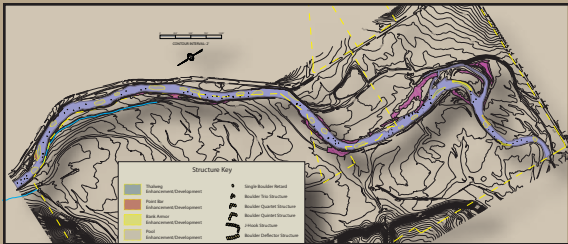


SFG Welcomes You to Spring 2009!

Fisheries Enhancement News

It was quite an exciting fall for the team here at SFG. We completed a large habitat enhancement project in Routt County (shown below and at bottom) and began work on three other projects.

The Routt County enhancement was the culmination of over



GIS map of selected attributes on the Routt County project

a year's worth of critical on-site data and research collection followed by construction spanning nearly three months.

The once marginal fishery had multiple deficiencies including a lack of seasonal flow based holding habitats and virtually featureless reaches, greatly limiting the fishery's productivity and holding capacity.

To address the lack of refuge, we prescribed a variety of strategic habitat features to increase carrying capacity and fish recruitment. Other efforts were focused on improving

and implementing insect and spawning habitats to allow the

entire 2 miles of stream to become a very productive and sustainable environment, and amongst the elite class of the region's finest fisheries.

An exciting project set for construction in mid-summer of 2009, is located in Clear Creek County



A partial view of the Upper Bear Creek Enhancement Area

and encompasses nearly two miles

of Upper Bear Creek (shown right). Our task on this brown trout fishery is to rectify the lack of overwintering habitat, high water flow refuge and low water holding habitat. Located within property bounds lies a Great Blue Heron rookery, which is currently applying undesired pressure on local fish populations. Strategic vegetative cover placement will assist in protection from the aerial predation that is currently limiting



SFG construction team at work on the Routt County fishery enhancement

the fish population vigor within the project reach. This fishery is destined to become a dry fly fishin' dream.

Quartz Creek in Gunnison County is the location of another freestone brown trout fishery in which SFG will begin construction efforts in the early fall. Four quarters of study and data collection have allowed SFG to prescribe habitat treatments addressing numerous limiting factors troubling this meandering beauty. The placement of specific habitats will provide holding and feeding opportunities in multiple flow regimes. The stream enhancement completion will compliment the existing stillwater fishery perfectly, and will provide an unforgettable fishing experience to anglers of all levels.



The process of collecting



SFG President Shannon Skelton and his wife Sharon field testing one of our recently completed habitat projects

Set for construction in 2010, our project in Carbon County, WY is an expansive enhancement covering over four miles of a freestone North Platte River tributary. This project is set to include river enhancement, an angler access trail system, foot bridges, as well as the creation of an off-channel stillwater oxbow fishery. This fishery already has modest populations of wild brook, brown and rainbow trout, which following SFG's habitat design and enhancement efforts, should boast a true flyfishing paradise.



Freshwater Scud (*Gammarus lacustris*)



Kamloops Rainbow (*O. m. gairdneri*)

FISH & FORAGE

This year's crop of fish are once again no exception to the ultimate in quality that SFG has produced year after year. SFG's meticulous organic rearing strategies and techniques continue to produce outstanding fish that are strong, vibrant and very aggressive. Ten different strains ranging upwards of 10+ pounds, ensure that the needs of any fishery can be well satisfied. Sizes and availability are limited, so it's best to call early in the season to get in on this excellent product.

MEASURING PROJECT SUCCESS

Over the last two seasons, SFG has been conducting post-construction monitoring

of biological and hydrologic attributes of a Spring Creek project we completed in the fall of 2007. Though some of the local aquatic insects residing in the nearby Elk River would potentially inhabit the Spring Creek system over time, the landowner chose to enlist SFG's services to manage and elevate available forage. SFG identified strategic locations within the system to develop freshwater scud and macroinvertebrate nurseries. These specialized breeding grounds were then strategically designed and integrated into the newly created Spring Creek. The efforts have produced outstanding results.

Currently abounding with invertebrates, the Spring Creek's ability to sustain and recruit multiple age classes of trout from the main channel of the Elk River is stronger than ever. With a formidable forage base and healthy population of salmonids, the only element missing is the angler. Fisheries containing abundant and diverse insect communities not only produce and sustain thriving fish populations, but are critical in buffering the negative effects of seasonal flow and temperature variations impacting these ecosystems. Contact us today to see how we can help manage and diversify your forage base, and maximize the productivity your specific fishery.

During our post-construction monitoring, SFG felt it necessary to validate the fish tales being reported by local anglers. The SFG crew spent a day afield testing their skills against the underwater inhabitants of the Spring Creek. Check out the video page on our website, www.SweetwaterFisheries.com, for a short clip of the SFG guys taking care of business!



SWEETWATER

FISHERIES GROUP

Innovation in Fisheries Stewardship and Management

Fort Collins, Colorado

970.227.5693

www.SweetwaterFisheries.com

A LOOK AT SFG SERVICES

River Restoration:

- Full-scale scientific data collection and CAD based stream design
- U.S. Army Corps and state and federal agency permitting
- Fish and macroinvertebrate habitat improvement
- Structural implementation and construction

Fisheries Science:

- Electrofishing population surveys and reporting
- Benthic Macroinvertebrate studies and forage base analysis
- Fishery management and consulting

Stream Corridor Analysis:

- Riparian plant species inventory
- Riparian identification & classification
- Riparian condition assessment
- Wetland delineation

Stillwater Development:

- Pond engineering and design
- Construction and lining (natural & synthetic)
- Aquatic habitat management
- Custom aeration design & installation

Fishery Stocking Services:

- Trophy Trout
 - Brown Trout
 - Brook Trout
 - Rainbow Trout (Multiple Species)
 - Cutthroat Trout
- Forage base stockings
 - Freshwater Shrimp (*Gammarus lacustris*)
 - Fathead Minnows (*Pimephales promelas*)



Sweetwater conducting a fish population survey



Detailed stream corridor analysis



SFG's Freshwater Shrimp nursery